



Häfele Duo standard – Standard application for flaps with handle



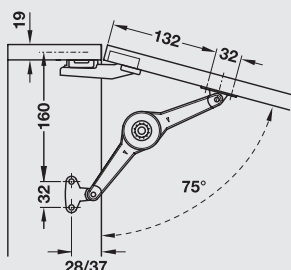
Note

- > The following mounting dimensions and sample measurements tables for this kind of application must be adhered to
- > Use two Duo fittings for flap widths from 600 mm and above
- > For use in combination with 110° concealed hinges with automatic closing spring or integrated soft closing mechanism



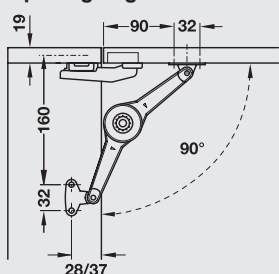
Installation as lid stay

Opening angle 75°



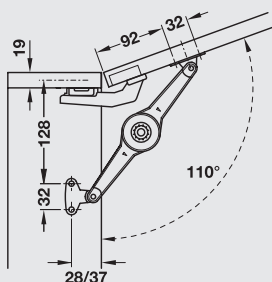
Cabinet height mm	Flap weight kg		Braking function	
	Locking function		1 fitting	2 fittings
	1 fitting	2 fittings	1 fitting	2 fittings
250	7.0	15.0	9.0	15.0
300	6.0	12.0	7.5	15.0
350	5.0	10.0	6.5	13.0
400	4.5	9.0	6.0	11.5
450	4.0	8.0	5.0	10.0
500	3.5	7.0	4.5	9.0

Opening angle 90°



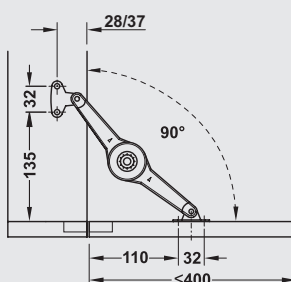
Cabinet height mm	Flap weight kg		Braking function	
	Locking function		1 fitting	2 fittings
	1 fitting	2 fittings	1 fitting	2 fittings
250	6.0	12.0	7.5	15.0
300	5.0	10.0	6.5	13.0
350	4.5	8.5	5.5	11.0
400	4.0	7.0	5.0	10.0
450	3.5	6.5	4.5	8.5
500	3.0	6.0	4.0	7.5

Opening angle 110°

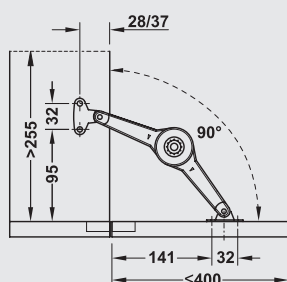


Cabinet height mm	Flap weight kg		Braking function	
	Locking function		1 fitting	2 fittings
	1 fitting	2 fittings	1 fitting	2 fittings
200	6.0	12.0	8.0	15.0
250	5.0	9.5	6.0	12.0
300	4.0	8.0	5.0	10.0
350	3.5	7.0	4.0	9.0
400	3.0	6.0	4.0	7.5
450	2.5	5.5	3.5	7.0
500	2.0	5.0	3.0	6.0

Installation as flap stay (use 2 fittings)



Separate catch required



Separate catch is not required

Application possible from a cabinet height of 300 mm (internal height min. 255 mm)

Space requirement for fitting inside the cabinet when the flap is being closed: 130 mm from front edge of cabinet

Cabinet height mm	Flap weight kg	Braking function
	Locking function	2 fittings
	2 fittings	
200	15.0	15.0
250	12.0	15.0
300	10.0	13.0
350	8.5	11.0
400	7.0	10.0